



13716



13716S

REVERSIBLE ELECTRIC COOLING FANS

12V High Performance. Ideal for OEM or High Performance applications. Configured as a puller from the factory fans mount on the inside and pull air through the radiator. Blades and polarity of the wiring may be reversed to push air through the radiator.

PART NO.	DESCRIPTION
13710	10", 1000 cfm, S-Blade
13712	12", 1200 cfm, S-Blade
13712S	12" Straight Blade
13714	14", 1900-2300 cfm push, 1500-1800 cfm pull, S-Blade
13714S	14" Straight Blade
13716	16", 2400-2700 cfm push, 2200-2500 cfm pull, S-Blade
13716S	16" Straight Blade
13701	Fan Installation Kit



ELECTRIC FANS

Reversible. Nylon mounting kit included.

PART NO.	DESCRIPTION
67010	10" Reversible - 1000 cfm
67012	12" Reversible - 1200 cfm
67014	14" Reversible - 1650 cfm
67016	16" Reversible - 2100 cfm



MUSTANG FAN

Heavy Duty. Bolts to radiator using sturdy brackets. Includes thermostat.

PART NO.	DESCRIPTION
67015	15" Puller, 2800 cfm Mustang



ELECTRIC FANS

Reversible. Black plastic.

PART NO.	DESCRIPTION
1986	12", 1400 cfm
1988	16", 2000 cfm
1994	Fan mounting kit, Nylon, Black



TRIMLINE FANS

Used as a primary fan, these economical fans free up wasted horsepower and increase gas mileage by replacing the stock fan (where applicable). Used as an auxiliary fan (pusher), this unit will provide additional cooling in an engine prone to overheating.

DESCRIPTION	PART NO.
10" pusher/puller	108
12" pusher/puller	112
14" pusher/puller	114
16" pusher/puller	116



BLACK MAGIC ELECTRIC FANS

Restores horsepower by replacing the stock fan, where applicable. Extends water pump life & increases gas mileage. Allows greater control of fan operation. Surface required: 18" x 16" x 4-1/4". Includes A/C & temp controls.

APPLICATION	PART NO.
15" 2800 cfm, Univ 4-wheel & off-road, HP & sport trucks	150
15" 2800 cfm, 86-93 Ford Mustang	175



12" LOW PROFILE FANS

Low profile allows this fan series to fit where others won't. Increases horsepower by replacing the stock belt fan. As a pusher fan, it supplies additional cooling when required. As a primary electric fan, increases HP, extends water pump life and increases gas mileage. Allows greater control of fan operation i.e., long idles, etc.

DESCRIPTION	SINGLE	DOUBLE
Puller, incl. A/C relay & adj. thermostat	110	210
Puller, does not incl. controls	120	220
Pusher, incl. A/C relay & adj. thermostat		230

SCIROCCO RADIATOR FAN

One-piece molded shroud with full contact rubber seal maximizes cooling efficiency and withstands the harsh demands of high-performance racing. Weighs only 6 pounds. May be used as a pusher or puller.

PART NO.
365





**TWIN LINE
ELECTRIC FANS**



DESCRIPTION	PART NO.
Universal w/adj. thermostat & A/C relay, Dual 10"	310
Universal w/o controls, Dual 10"	320

DUAL ELECTRIC FANS

Built in variable speed control module with adjustable thermostat, A/C relay and manual switch connection.



APPLICATION	PART NO.
Universal 27" (Twin 13-1/2" Fans)	295

RACE FANS

Rigid all metal fans provide maximum airflow at low and high RPM.

DESCRIPTION	PART NO.
15" Dia. w/steel blades	1615P
17" Dia. w/steel blades	1617P
15" Dia. w/aluminum blades	1715P
17" Dia. w/aluminum blades	1717P



BLACK MAGIC X-TREME ELECTRIC FAN

Puller. Covers 45% more radiator surface area than the regular Black Magic fan! Adj. thermostat, A/C relay and manual switch connection.

PART NO.
180



HD COOLING FANS

Aluminum blades offer a one pound weight savings. 33° pitch. Fits most pumps with dual bolt pattern.

DESCRIPTION	PART NO
GM 17"	80181
GM 17" (aluminum)	80181A
GM 15"	80182
GM 15" (aluminum)	80182A



4 BLADE FAN

APPLICATION	PART NO.
17-1/2"	80183



**400 SERIES
ONE PIECE MOLDED FANS**

Molded nylon fans are ideal for race & performance applications when cost or weight is a concern.

DESCRIPTION	PART NO.
14" Clockwise	414
15" Clockwise	415
16" Clockwise	416
17" Clockwise	417
18" Clockwise	418



**1000 SERIES
PERFORMANCE FANS**

Low pitch reduces drag on the engine which equates to higher performance and improved gas mileage.

DESCRIPTION	PART NO.
17" Dia. w/blue star/aluminum blades	1017
17" Dia. w/blue star/stainless steel blades	1070
18" Dia. w/blue star/stainless steel blades	1080



**1300 SERIES
STANDARD ROTATION FANS**

Stainless steel blades flex at higher RPM's reducing drag, pumping extra horsepower, and improving fuel economy.

DESCRIPTION	PART NO.
17" to 19-5/16" Dia. w/red star	1307 - 1309
12" to 19-5/16" Dia. w/blue star	1312 - 1319
17-5/16" Dia. w/chrome star	1370



**1500 SERIES
REVERSE ROTATION FANS**

Semi-flex stainless steel blades

DESCRIPTION	PART NO.
17"	1517
18-1/4"	1518
19-5/16"	1519



PLASTIC FLEX FANS

Lightweight design. Extends water pump life. Standard rotation only.

PART NO.	DESCRIPTION
13816	16"
13817	17"
13818	18"





ELECTRIC FANS WITH CURVE BLADES

12V, Reversible



DESCRIPTION	PART NO.
12-inch Universal	R1012
16-inch Universal	R1016



FAN RELAY KIT

includes a heavy-duty Keep It Clean relay and a 51" relay socket with color-coded wires.



PART NO.
124950



FAN SPACERS

Belt-driven fans work best when they are 3/4" to 1" from the radiator's surface. Aluminum. Standard 5/8" pilot.



DESCRIPTION	PART NO.
1/2" thick, 1-1/4" bolt required	504
2" thick, 2-3/4" bolt required, (use when replacing clutch fan)	516

FAN SPACER KITS

Contains spacer, shim, capscrews and lockwashers.



DESCRIPTION	PART NO.
FORD, GM, & AMC	
1/2" x 5/8" female pilot dia.	14544
1" x 5/8" female pilot dia.	14548
2" x 5/8" female pilot dia.	14556

ELECTRIC FAN ACCESSORIES

DESCRIPTION	PART NO.
A/C Relay	31146
Adjustable Temperature Sensor	31147



FAN SPACER KITS

Designed for Mr. Gasket flex fans, allows adjustment for clearance.



PART NO.	DESCRIPTION
2391	1/2" GM/Ford
2392	1" GM/Ford
2393	2" GM/Ford
4952	1-1/2" GM/Ford
4953	2-1/4" GM/Ford



FAN WIRE HARNESS

Make it easy! Zirgo's ZFPL fan harness makes it a snap to wire up any zirgo fan. Simply plug in the harness and connect your wire! Fits all Zirgo fans and many other aftermarket fans.



DESCRIPTION	PART NO.
Fan Wire Harness	122000

RADIATOR COOLING FAN TIES

Zirgo's™ new heavy-duty Radiator Cable Ties with Surloc™ technology results in one of the strongest radiator cable ties on the market. Compatible with all cooling fans. Conveniently packaged 4 per bag.



DESCRIPTION	PART NO.
Fan Wire Harness	121270



ALUMINUM PRO SERIES UNIVERSAL RADIATORS

When time is crucial and weight means everything, let a Griffin aluminum Pro Series radiator give your high-powered race car the advantage. Manufactured with lightweight aluminum technology, these radiators are designed in a wide variety of racing sizes for your cooling needs. The Griffin design incorporates open-fin spacing that promotes airflow through the radiator to enhance the cooling and help eliminate clogging.



PART NO.	SIZE	ROWS & TUBE SIZE	INLET - OUTLET
1-25182-X	22" x 19"	2 row 1"	Top Left, Bottom Right
1-26182-X	22" x 19"	2 row 1"	Top Right, Bottom Left
1-25222-X	26" x 19"	2 row 1"	Top Left, Bottom Right
1-26222-X	26" x 19"	2 row 1"	Top Right, Bottom Left
1-25242-X	27.5" x 19"	2 row 1"	Top Left, Bottom Right
1-26242-X	27.5" x 19"	2 row 1"	Top Right, Bottom Left
1-25272-X	31" x 19"	2 row 1"	Top Left, Bottom Right
1-26272-X	31" x 19"	2 row 1"	Top Right, Bottom Left



ALL PRO ULTRA DUTY RADIATORS



APPLICATION	PART NO.
GM Cars 68-86, GM Trucks 77-91, 18.6" x 32.44"	5026
GM Cars 66-88, GM Trucks 91-93, 18.6" x 25.375"	5028
Camaro/Firebird 82-92, 24.25" x 17.25"	5062
Ford Mustang 80-93, Cougar 80-88, 24.38" x 17.38"	5029
Ford Mustang 64-66, Comet 60-65, 15.63" x 17.38"	5030
Ford Mustang 64-66, 15.63" x 17.38"	5059



STANDARD UNIVERSAL FIT RADIATORS

Built with two 1" rows for a total core thickness of 2-1/4" and features 3" tanks.

PART NO	OVERALL HGT	TANK HGT	TANK WIDTH TOP	TANK WIDTH BTM	TANK THICK	FILLER	INLET & LOC	OUTLET & DRY WGT LOC	LOC
80100N	20"	18-1/2"	22-3/8"	21-1/2"	3"	R	1-1/2" L	1-3/4" R	11.2
80100FN	20"	18-1/2"	22-3/8"	21-1/2"	3"	L	1-1/2" R	1-3/4" R	11.2
80101N	20"	18-1/2"	27-1/2"	27-1/2"	3"	R	1-1/2" L	1-3/4" R	13.6
80101FN	20"	18-1/2"	27-1/2"	27-1/2"	3"	L	1-1/2" R	1-3/4" L	13.6
80102N	21"	18-1/2"	32"	31-1/16"	3"	R	1-1/2" L	1-3/4" R	15
80102-2N	21"	18-1/2"	32"	31-1/16"	3"	R	16AN-M L	1-3/4" R	15
80116N	17-5/16"	16-1/2"	27-1/2"	27-1/2"	3"	R	1-1/2" R	1-3/4" L	14.1



SCIROCCO STYLE DRAG RACING RADIATOR

Double Pass design. Top fin covers built in. Four 1/4"-20 mounting bungs. Two rows of one inch tubes. 100% TIG welded with 2" foot mounts.

PART NO	OVERALL HGT	TANK HGT	TANK WIDTH TOP	TANK WIDTH BTM	TANK THICK	FILLER	INLET & LOC	OUTLET & DRY WGT LOC	LOC
80104N	13-1/4"	12-1/2"	21-1/2"	21-1/2"	3"	L	1-1/2" R	1-3/4" R	8.1
80107N	13-1/4"	12-1/2"	21-1/2"	21-1/2"	3"	None	1-1/4" R	1-1/4" R	8.1



R9454

CHROME FAN SHROUD

PART NO.	DESCRIPTION
R9453	3-in wide x 20-in Dia.
R9454	5-in wide x 20-in Dia.
R9453X	Bolt Kit for Fan Shroud



R9453X



RADIATOR RELIEF

Decreases engine operating temp by as much as 30° F. 32 Fl. Oz. Bottle (946 ml.)

PART NO.
040104



RADIATOR SHROUD

Trimming and drilling required for installation.

DESCRIPTION	PART NO.
3" wide universal	9864
5-1/2" wide universal	9865



PRO-BLEND 40 BELOW WATER ADDITIVE

Reduces coolant temperatures up to 40 degrees. Prevents coolant temperature from rising excessively while vehicle is towing, climbing, sitting in traffic, or running with restricted air flow. Originally developed for NASCAR-type race cars that run under the most severe heat conditions.

DESCRIPTION **PART NO.**
32-oz. can 4032



PURPLE ICE COOLANT

Use in conjunction with antifreeze in regions where freezing temperatures occur. Compatible with traditional ethylene glycol antifreeze (green) and GM Dex-Cool® antifreeze.

DESCRIPTION **PART NO.**
16oz. Bottle 12600





RADIATOR CAP

DESCRIPTION	PART NO.
Inline 1.25"/1.5"	2481



ALUMINUM RADIATOR CAPS

DESCRIPTION	PART NO.
Polished, Plain (16-lb. Pressure)	R5010
Chrome, Plain (16-lb. Pressure)	R5011



RACING RADIATOR CAPS

DESCRIPTION	PART NO.
12-16 lbs	63313
14-18 lbs	63316
19-21 lbs	63320
23-25 lbs	63324
27-29 lbs	63328



RADIATOR CAP

DESCRIPTION	PART NO.
20 PSI	41100



RADIATOR CAPS

2.5" diameter and are machined from 6061-T6 billet aluminum. Knurled sides provide a positive grip. The billet top and radiator cap come disassemble to allow for proper positioning of the logo.



PART NO.	DESIGN	DESCRIPTION
75120	Plain	Stant 16-lb radiator cap
76120	Plain	Stant 7-lb radiator cap
75320	Bowtie	Stant 16-lb radiator cap
75420	V8	Stant 16-lb radiator cap



HIGH PERFORMANCE THERMOSTATS

PART NO.	DEGREE	APP
41160	160	GM
41180	180	GM/Ford/AMC
41195	195	GM/Ford/AMC
42160	160	Ford
42180	180	Ford
43160	160	Mopar
43180	180	Mopar



HIGH PERFORMANCE THERMOSTATS

All brass and copper construction. Opens at the correct temperature regardless of engine speed.

DESCRIPTION	PART NO.
160° GM/Ford/AMC	4363
180° GM/Ford/AMC	4364
195° GM/Ford/AMC	4365
160° Chry/Dodge/Plym	4366
180° Chry/Dodge/Plym	4367



THERMOSTAT SENSOR KIT

Allows fan to operate automatically. Includes 30 amp relay.

DESCRIPTION	PART NO.
170°F - 190°	1992



ENGINE SEAL

Sealers for cooling system leaks. 1 pint bottles.



DESCRIPTION	PART NO.
Ceramic Engine Seal - Do not use with antifreeze	35500
All Weather Seal - May be used with antifreeze	35520



THERMOSTAT SWITCH

DESCRIPTION	PART NO.
160°/On, 140°/Off	63760



RADIATOR HOSE KIT

DESCRIPTION	PART NO.
12" Stainless steel	R7302
24" Stainless steel polished ends	R7304
24" Stainless steel chrome ends	R7305
36" Stainless steel chrome ends	R7308
36" Stainless steel polished ends	R7307
48" Stainless steel polished ends	R7310
48" Stainless steel chrome ends	R7311



RADIATOR HOSE FILLERS

356-T cast aluminum



DESCRIPTION	PART NO.
1-1/2" hose to 1-1/2" hose	63730



CHROME RADIATOR SUPPORT

DESCRIPTION	PART NO.
Camaro/Firebird 70-81	78700
Chevelle 68-77	78735



RADIATOR SUPPORT

DESCRIPTION	PART NO.
68-77 Chevelle	9428



CHROME RADIATOR SUPPORT PANEL

DESCRIPTION	PART NO.
70-81 Camaro Heavy Duty	R9426
68-73 Chevelle & 68-79 Nova	R9427
68-77 Chevelle Heavy Duty	R9428
67-69 Camaro/Firebird Radiator Support Bar	R9175

HOSE ADAPTER, REDUCER & CLAMPS

1-3/4 inch Adapter with 1-1/2 inch & 1-1/4 inch Reducers and 2 Clamps for Radiator Hose (Package of 2)

DESCRIPTION	PART NO.
1-3/4 inch Adapter w reducers & clamps	R7317

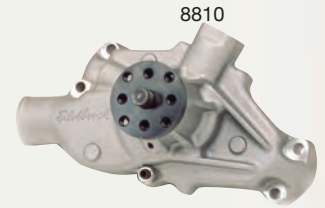


A Holley Performance Brand



MECHANICAL RACING WATER PUMPS

DESCRIPTION	PART NO.
SB Chevy short Corvette, satin	9220
SB Chevy short Corvette, adj-satin	9221
SB Chevy short, satin	9222
SB Chevy long, satin	9241

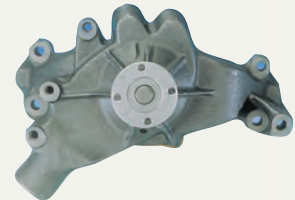


8810

VICTOR SERIES ALUMINUM WATER PUMPS

Flows in only one direction for optimum efficiency. 5/8" pilot shafts and 3/4" ball/roller bearing.

APPLICATION	PART NO.
Ford, 352-428 FE	8805
SB Chevy, short style pump, 55-68 pass cars, 69-70 Corvette, 55-72 light duty truck	8810
SB Chevy Circle Track, Short - 8AN fittings at 90°	8816
SB Chevy, Circle Track, Short - 3/8" fittings at 45°	8817
SB Chevy Circle Track, Short - 5/8" pilot diameter	8820
SB Chevy, Circle Track, Long	8821
Ford, 289/ 302/ 351W, Circle Track	8833
SB Chevy, long style pump, 69-87 or 90° V6 passenger cars, 73-86 light duty trucks	8811
1986-93 5.0L V8s using a Serpentine Drive Belt, Reverse Rotation	8840
SB Ford, for 1965-68 289, 1968-69 302, 1969 351-W 5/8" pilot shaft	8841
Ford, 302/ 351W	8843
BB Chevy Short - 5/8" pilot diameter	8850
BB Chevy, Long	8851
BB Chevy - with Aftermarket Serpentine Pulley	8854
Ford, 429/ 460	8866
Chrysler, 318/ 340/ 360	8877
Chevy, 4.3 V6/ 5.0/ 5.7L, Long	8881



HIGH VOLUME WATER PUMPS

All new water pumps incorporate special high flow impellers that increase coolant flow up to 30%. Improved flow results not only in a cooler engine under high stress situations, but also more even cooling of all portions of the engine.

PART NO.	APPLICATION	MATERIAL
16230	Ford 289-351W 65-69	Aluminum
16231	Ford 289-351W 70-78	Aluminum
16281	Pontiac 389-455	Aluminum
16321	BB Chevy Short	Aluminum



41058



41034



41000



41004



41001



41008



41009



41002



41003



41006

HIGH PERFORMANCE WATER PUMPS



APPLICATION	RACE	STREET
SB Chevy - Short	41058	41000
SB Chevy - Short Race Only	41034	---
SB Chevy - Reverse	---	41004
SB Chevy - Long	---	41001
BB Chevy - Short	---	41008
BB Chevy - Long	---	41009
SB Ford- 302 - 351W 70-87	---	41002
SB Ford 5.0L - Reverse	---	41003
Ford 429 - 460	---	41006
Ford 351C 70-79	---	41007



WATER PUMP HOUSING

With Bosses for Both Hemi® and Big Block Engine Applications (Includes Water Outlet)

APPLICATION	PART NO.
Mopar 361-440 68-78	5244001



WATER PUMP FITTING

DESCRIPTION	PART NO.
Steel Water Pump Fitting 1/2-in NPT to 3/4-in Barb	R9514



WATER PUMPS

DESCRIPTION	PART NO.
SB Chevy, Short, Mechanical	63500
BB Chevy, Short, Mechanical	63520
SB Chevy, Electric 19 gpm	63539
BB Chevy, Electric 19 gpm	63546
BB Chevy, Electric 30-37 gpm, Billet Alum.	63547
Ford, 289/302/351W, Electric 30-37 gpm, Billet Aluminum	63585



WATER PUMPS

DESCRIPTION	PART NO.
Ford, 302/351W, Mechanical, Hi-Volume	8210P
Ford, 5.0L Mechanical	8215P
Chevy, Small Block Team G, Electric	8217
Chevy, Big Block Team G, Electric	8218
8217/8218 Rebuild Seal	W430

MECHANICAL WATER PUMPS



DESCRIPTION	PART NO..
SB Chevy short, satin	9208
SB Chevy short, polished	9208P
BB Chevy short, satin	9212
BB Chevy short, polished	9212P
SB Chevy long, satin	9240
SB Chevy long, polished	9240P
BB Chevy long, satin	9242
BB Chevy long, polished	9242P



Anti-cavitation, stamped 6 blade impeller. **STREET**



ELECTRIC WATER PUMPS

100 SERIES -

35 gallons per minute of water flow. Most pumps allow a 1" NPT port to direct water into the pump via one of the inlet adapters.

200 SERIES -

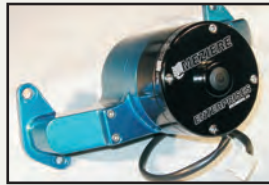
Integrated expansion tank to remedy the problems associated with low and horizontally mounted radiators.

300 SERIES -

The highest flowing electric water pumps on the market. Heavy duty motors provide increased horsepower and torque.

400 SERIES -

These belt driven pumps are show quality outside and race driven inside.



PART NO.	DESCRIPTION	COLOR
SB CHEVY		
WP 101B	SB Chevy	Blue
WP 101R	SB Chevy	Red
WP 101S	SB Chevy	Black
WP 101U	SB Chevy	Polished
WP 118HD	SB Chevy LT1 Heavy Duty	Black
WP 119S	SB Chevy LS1	Black
WP 301U	SB Chevy/4.3L V6	Polished
WP 319S	LS1 Street Hi-Flow w/idler	Black
BB CHEVY		
WP 100B	BB Chevy	Blue
WP 100R	BB Chevy	Red
WP 100S	BB Chevy	Black
WP 100U	BB Chevy	Polished
WP 200S	BB Chevy Reservoir	Black
WP 200U	BB Chevy Reservoir	Polished
WP 300U	BB Chevy Hi-Flow 55 GPM	Polished
WP 300S	BB Chevy Hi-Flow 55 GPM	Black
SB FORD		
WP 111R	SB Ford	Red
WP 111S	SB Ford	Black
WP 173U	SB Ford Yates/Danny B	Polished
WP 311U	SB Ford Race 55GPM	Polished
WP 312S	SB Ford Street 55 GPM	Black
WP 346S	SB Ford Mod Hi-Flow w/Idler	Black
BB FORD		
WP 108B	BB Ford	Blue
WP 308B	BB Ford 460 Hi-flow 55 GPM	Blue
SB MOPAR		
WP 114S	SB Mopar	Black
BB MOPAR		
WP 106R	BB Mopar	Red
WP 106S	BB Mopar	Black
WP 206N	BB Mopar Reservoir	Natural
BB BUICK		
WP 126HD	BB Buick Heavy Duty	Black
UNIV		
WP 136S	Inline Remote	Black



ELECTRIC WATER PUMPS

Pumps up to 35+ gallons per minute.



DESCRIPTION	PART NO.
SB Chevy, Blue	66225B
SB Chevy, Black	66225BK
SB Chevy, Red	66225R
Mechanical, SBC polished, long	67264



ELECTRIC WATER PUMP

Aluminum, rebuildable.



DESCRIPTION	PART NO.
SB Chevy	WP1



ELECTRIC WATER PUMP DRIVE KIT

DESCRIPTION	PART NO.
Chevy/ Chrysler/ Dodge/ Ford/ Plymouth	63750



WATER PUMP BACKING PLATES

Billet Aluminum, Each



PART NO.	DESCRIPTION	COLOR
WP113R	SB Ford Back Plate Windsor	Red
WP113S	SB Ford Back Plate Windsor	Black
WP113U	SB Ford Back Plate Windsor	Polished
WP109S	BB Ford Back Plate	Black



WATER PUMP FITTINGS

PART NO.	DESCRIPTION	COLOR
WN0040U	#16AN Water Neck Fitting	Polished
WP1012B	#12AN to 1" inlet	Blue
WP1012U	#12AN to 1" inlet	Polished
WP1125B	1.25 WP inlet	Blue
WP1125R	1.25 WP inlet	Red
WP1125S	1.25 WP inlet	Black
WP1150U	1.50 WP inlet	Polished
WP1175B	1.75 WP inlet extended	Blue
WP1175R	1.75 WP inlet extended	Red
WP1175S	1.75 WP inlet extended	Black
WP1175U	1.75 WP inlet extended	Polished
WP2175B	1.75" to 1" inlet smooth hose	Blue
WP2175S	1.75" to 1" inlet smooth hose	Black



UNIVERSAL ELECTRIC WATER PUMP DRIVE KIT

PART NO.
4333

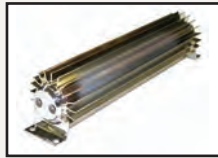




TRANSMISSION COOLER

Filtered fluid, Natural finish, aluminum.

DESCRIPTION	PART NO.
3-1/4" x 12-1/2" x 3"	41200
3-3/4" x 19" x 6-1/4"	41205
Replacement filter for 41200	97290



TRANSMISSION COOLERS

Satin Aluminum

DESCRIPTION	PART NO.
Dual Pass, 12-inch	R5050X
Single Pass, 15-inch	R5051
Dual Pass, 15-inch	R5051X



TRANSMISSION COOLER

Fluid cooler, black aluminum.

DESCRIPTION	PART NO.
7-1/2" x 15-1/2" x 3/4"	823500
10" x 15-1/2" x 3/4"	823800



SUPERCOOLER ENGINE OIL COOLERS

The same design as B&M's Supercooler transmission coolers, these coolers come with mounting hardware, filter adapter, hose and fittings. Dimensions are 11" x 8" x 1-1/2".

APPLICATION	PART NO.
All GM V8s with recessed filter	70270



HIGH PERFORMANCE OIL COOLER

DESCRIPTION	PART NO.
7-1/2" x 13-3/4" x 3/4" -6AN in/out, 20,000 GWW	13720



SUPERCOOLER AUTOMATIC TRANSMISSION COOLERS

B&M's patented, space-saving, 'stacked plate' design offers the lowest flow restriction and the most efficient heat transfer. Aluminum.

GVW	PART NO.
15,000 lbs. (polished)	70265
16,000 lbs. (black)	70255
19,000 lbs. (black)	70268
24,000 lbs. (black)	70264
28,000 lbs. (black)	70266



TRANSLIFE TRANSMISSION OIL COOLERS & REMOUNT KITS

Longer life and improved performance even under extreme conditions.

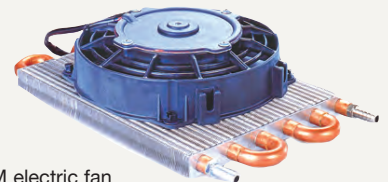
DESCRIPTION	PART NO.
26,000 lb. GVW, heavy duty, 10" x 20" x 3/4"	4126
Tranny Cooler Remount Kit (set of 4)	3910



FRAME RAIL COOLER

Designed to mount on the side of a frame rail or cross member, this 20" cooler is just 2-1/2" x 3/4". Fitted with #6AN fittings standard. Aluminum.

DESCRIPTION	PART NO.
5 in. x 12 in. x 3/4 in, 10,000 GWW	3810
12,000 GWW	3812
16,000 GWW	3816
7-1/2 in. x 15 in. x 3/4 in, 18,000 GWW	3818
7-1/2 in. x 20-1/2 in. x 3/4 in, 20,000 GWW	3820
Aluminum/ Copper; 2-1/2 in. x 20 in. x 3/4 in	4109



REMOTE MOUNT TRANSMISSION COOLER FAN

This compact unit features a 300 CFM electric fan that provides its own cooling air supply. 7-1/2" x 12" x 3-1/8". Weighs less than 3 lbs.

PART NO.
4190



STACKED-PLATE REMOTE OIL COOLER

High performance, No restriction, No oil pressure drop, AN inlets -6 for transmission -8 for engine oil, High flow fan unit is reversible - will function in push or pull mode, Billet aluminum brackets

DESCRIPTION	PART NO.
-6AN x 3/8" Barb, Transmission	13750
-8AN x 1/2" Barb, Engine Oil	15850



CHROME WATER NECKS WITH O-RING

Chrome plated water necks feature an O-ring style seal to prevent water leaks.

APPLICATION	PART NO.
GM 66-76	2557
Chevy V8 early	2660
Chevy V8 late	2661
Ford V8 289-302-351W	2662
Ford 351C	2663
Ford 429/460	2664
Pontiac 90°	2667
Mustang 5.0L 90°, 79-Up	9713
SB/BB Oldsmobile 90°	9714
SB/BB Chevy Straight Up	9845

WATER OUTLET RESTRICTOR KIT

Set includes one 5/8 in., one 3/4 in., and one 1 in. restrictor plate.

DESCRIPTION	PART NO.
Aluminum, Chevy/Ford, Set of 3	6126



OIL & TRANSMISSION COOLER MOUNTING KIT

DESCRIPTION	PART NO.
Universal	1989



WATER NECK O-RING

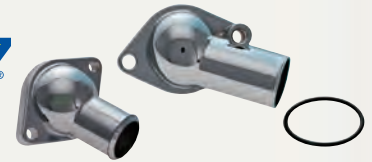
Replacement O-Rings, 2 pack

DESCRIPTION	PART NO.
2660, 2661, 9845, 2667 Water Necks	2668
2662, 2663, 9713 Water Necks	2669



WATER NECKS

DESCRIPTION	PART NO.
Chrome, SB/BB Mopar, Straight	4987
Polished, Late Chevy 283-350, 45°, swivel	6003
Polished, Late Chevy 283-350, 90°, swivel	6007



CHROME WATER NECKS

Proform Chevrolet water necks utilize neoprene O-ring gaskets instead of regular gaskets to eliminate leakage. Supplied with chrome bolts.

DESCRIPTION	PART NO.
55-65 V8, 64 Chevy II V8, 56-63 Corvette, GM Performance Part	141-500
66-75 Chevy, Camaro & Chevelle V8 GM Performance Part	141-501
All Mopar, Chevy V8 & 90° V6	66207
55-65 V8, 64 Chevy II V8, 56-63 Corvette	66209
66-75 Chevy, Camaro & Chevelle V8	66210
Ford 289/302/351W 65-75	66211
Pontiac V8 64-75	66212



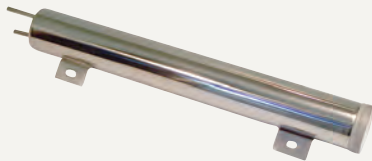
WATER NECKS

DESCRIPTION	PART NO.
Chrome, 64 & up Chrysler	R4987
Polished 55-64 Chevy	R6002
Chrome 1955-64 Early Chevy V8 O-Ring	R9228
Polished 45°, Swivel, Chevy 66-75	R6003
Chrome 45°, Swivel, Chevy 66-75	R6003C
Polished 90°, Swivel, Chevy 66-75	R6009
Polished 15°, O-Ring, SB Chevy 66-75	R6015
Chrome, 15°, SB Chevy 283-350 66-75 O-Ring	R6015C
Chrome, O-Ring, Late Chevy V8 66-75	R9229
Chrome Late Chevy Gasket 66-75	R4789
Chrome Ford 260-289-302-351W 66-75 Gasket	R4790
Chrome 1965-75 Ford 260-289-302-351W O-Ring	R9440
Chrome Oldsmobile 330-350-425-455 Gasket	R9403
Rplcmnt. O-Ring for Alum. Water Neck 2-pk.	R6004



ALUMINUM FILLER NECKS

DESCRIPTION	PART NO.
90°, Chevy, SB/BB/90 Degree V6	63420
2-5/16", Tall, SB/BB Chevy	63421
90°, SB/BB Chevy	63423
Straight Up, SB/BB Chevy	63460
Radiator Cap Filler, SB/BB Chevy, Blue	63465
Radiator Cap Filler, SB/BB Chevy, Natural	63466
Radiator Cap Ext, 5.75 in. Tall, SB/BB Chevy	63467
Block-Off Plate Aluminum, Natural, Chevy	63471
Aluminum, Radiator Style, Natural	63486



OVERFLOW TANK

Stainless steel construction with knurled cap. Includes mounting bracket and hardware. Polished stainless.

DESCRIPTION	PART NO.
2" x 15"	70515



OVERFLOW TANK

Stainless, includes mounting bracket.

DESCRIPTION	PART NO.
2" x 13"	R6072X
2" x 15"	R6073X
3" x 10"	R6076X
3" x 8"	R6571

CHROME RADIATOR FLUID RESERVOIR TANK

PART NO.
R6570



RADIATOR OVERFLOW TANK

Lightweight plastic design holds full quart capacity. May be used in many forms of competition, NHRA & IHRA accepted. Vented tank includes hose fitting and drain cock. Dimensions: 10-1/2" high, 3" dia.



DESCRIPTION	PART NO.
Single Inlet/Outlet, Universal	63657
Single Inlet/Outlet, Vented, Universal	63660

WATER OUTLET RESTRICTOR KIT

Restricting coolant flow leaving the engine lets you control the amount of heat absorbed by the coolant. Plates are 5/8", 3/4" & 1" I.D. All are 2-1/8" O.D.



APPLICATION	PART NO.
GM V8 & V6, Ford 260-302, 351W	63440



OVERFLOW TANKS

Machined from 6061-T6 billet aluminum and include two adjustable billet mounting brackets to ensure proper positioning. Tanks are 2" in diameter and available in three lengths. Industry leading mirror finish polish

PART NO.	DESIGN	SIZE
77113	Smooth	13"L x 10oz
77115	Smooth	15"L x 13oz
77215	Ribbed	15"L x 13oz
77117	Smooth	17"L x 16oz



70002

70005
Includes filter

COOLING CATCH CANS

These high-strength polyethylene overflow bottles include hardware for flexible mounting options, inlet fitting and drain.

PART NO.	DESCRIPTION
70001	Black Overflow Bottle
70002	Red Overflow Bottle
70003	White Overflow Bottle
70004	Blue Overflow Bottle
70005	Black with Breather Filter



CATCH CAN

PART NO.	DESCRIPTION
80158	Catch Can - 100% Aluminum



HEATER HOSE KIT

Stainless steel

DESCRIPTION	PART NO.
Polished finish	R7313
Chrome finish	R7314



HEATER HOSE FITTING

Chrome, each.

DESCRIPTION	PART NO.
3/4 in. Hose Barb to 1/2 in. Male NPT	9743
5/8 in. Hose Barb to 1/2 in. Male NPT	9744



WATER PUMP FITTINGS & ACCESSORIES

DESCRIPTION	PART NO.
1" NPT to -16 AN Hose, Aluminum	63541
Straight, 1". NPT to 1-1/2" Smooth Hose, Aluminum	63542
Straight, 1". NPT to 1-3/4" Smooth Hose, Aluminum	63543
Replacement motor, 12V, Gold Iridited	97210
Water pump spacer kit, SB Chevy	63510
Water pump spacer kit, BB Chevy	63610